

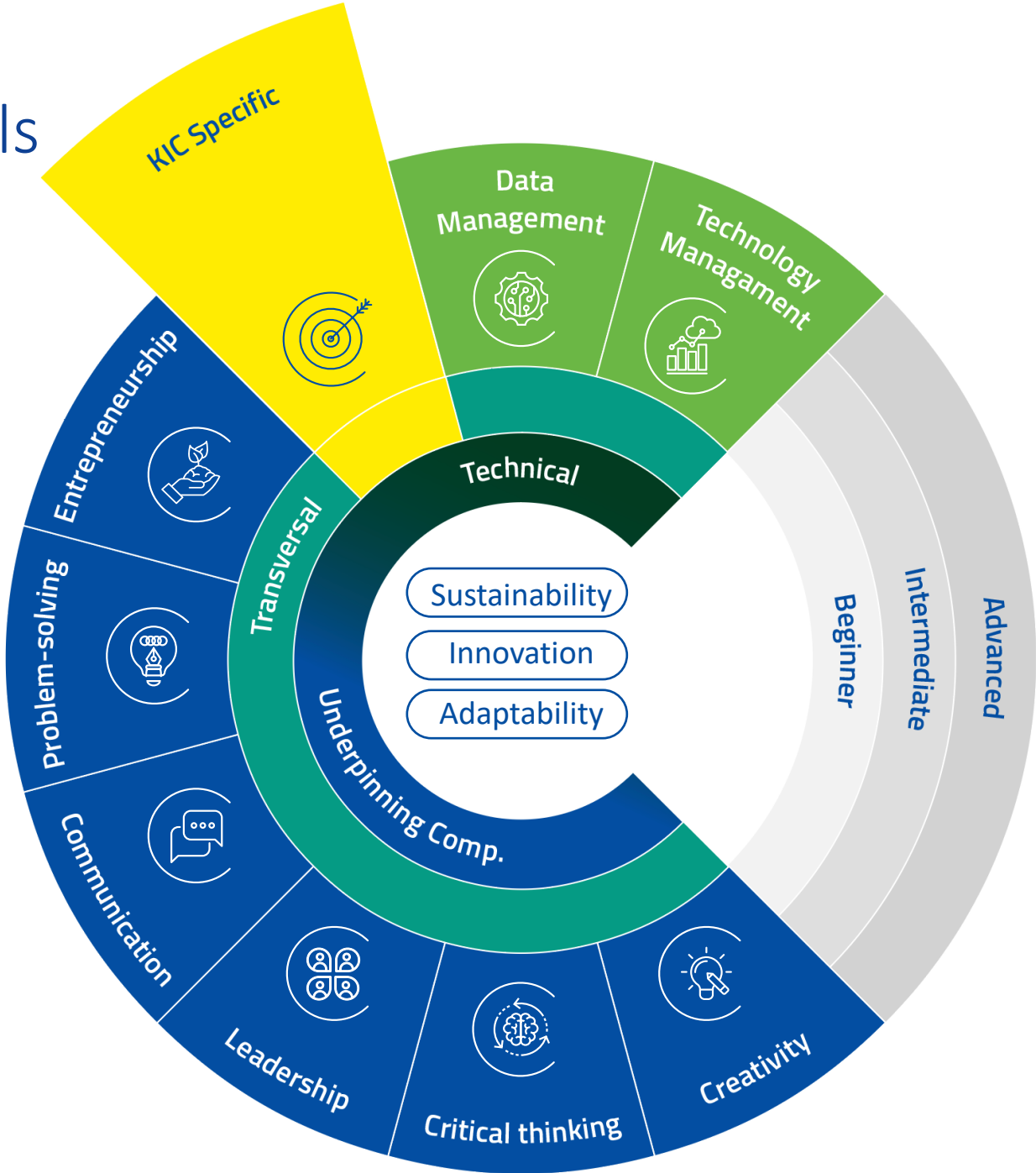


EIT Campus Skills Development Guide

The EIT Campus Skills Development Guide is designed to help you navigate the diverse educational opportunities offered through the EIT Campus platform. The guide's three-level structure (beginner, intermediate, and advanced) covers core competencies grouped into underpinning and technical capabilities. Underpinning capabilities such as Entrepreneurship, Problem-solving, Creativity, Critical Thinking, Leadership, and Communication foster transformative thinking and lay a foundation for driving cultural change. Technical capabilities, including Data Management, Technology Management, and industry-specific competencies (tailored for individual KICs), offer broad, adaptable skills and specialised knowledge for your chosen or targeted industries.

The guide strongly emphasises lifelong learning and ensures you can continuously grow personally and professionally. By emphasising core skills that are adaptable at every level, you can track their progress and acquire practical abilities that benefit your careers and communities. Moreover, the EIT Campus facilitates a learning environment where you are prepared for your current roles and empowered to act as knowledge ambassadors, sharing insights and fostering responsibility within your communities.

EIT Campus Skills Development Guide



The Layers

The Competencies

The Levels



Sustainability

Innovation

Adaptability

Sustainability, Innovation, and Adaptability are key to the EIT Campus Skills Development Guide. Sustainability helps you create solutions for global challenges, innovation empowers you to seize new opportunities, and adaptability lets you adjust to changing environments and respond effectively to new challenges. These principles guide your learning journey on the platform.

Technical competencies

refer to the specific skill set and know-how required to perform particular tasks, processes, or functions within a field or role. While they are often role-specific, they can also be transversal, meaning they apply across multiple fields or industries, supporting the interdisciplinary approach of the EIT Campus.

Underpinning competencies

are foundational abilities that support the effective application of technical skills. These competencies are inherently transversal, as they are broadly applicable across roles, sectors, and disciplines, supporting the interdisciplinary approach of the EIT Campus.

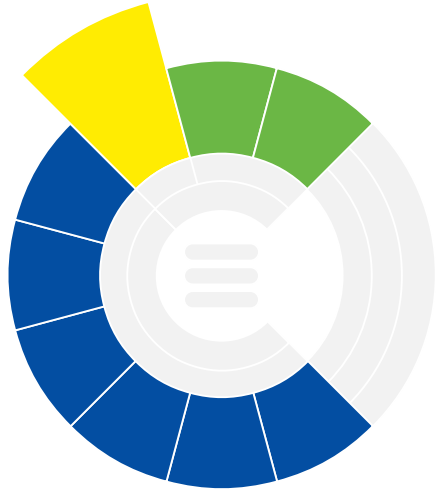
Transversal competencies

are versatile and applicable across various roles, industries, and contexts.

KIC Specific competencies

are tailored to meet the unique demands of particular roles, domains, or industries. These competencies are developed by the Knowledge and Innovation Communities (KICs), which focus on specialised topics represented within the EIT Campus.

The Layers The Competencies The Levels



Creativity

The ability to generate innovative solutions by making connections among apparently unrelated phenomena and facts.

Critical Thinking

The ability to make judgments clearly and rationally by processing, engaging and evaluating information through reflective and independent thinking.

Leadership

The ability to effectively guide, influence, and support others towards achieving collective goals.

Communication

The ability to transfer information appropriately and effectively in a given situation or context, in verbal, non-verbal, and visual manners.

Problem-solving

The ability to identify, analyse and evaluate a problem to derive the most practical and fitting solution.

Entrepreneurship

The ability to identify and act upon opportunities and ideas, transforming them into value for others by effectively initiating, managing, and scaling ventures or projects.

Technology Management

The ability to use emerging technologies in (radical or breakthrough) innovation processes.

Data Management

The ability to manage and analyse information securely and efficiently to derive conclusions and take action.

The Layers The Competencies The Levels



1) Beginner

Start your upskilling journey by building a strong foundation of knowledge and essential competencies. At this level, EIT Campus courses introduce fundamental concepts, core principles, and basic techniques within a specific field. You will gain the skills to understand and apply key ideas, perform simple tasks, and develop a basic level of confidence in tackling new topics. These courses are designed to help you take the first step in upskilling or reskilling, laying the groundwork for more advanced learning and future career growth.

2) Intermediate

Advance your learning by deepening your skills and developing greater independence. EIT Campus courses at this level focus on strengthening your ability to apply knowledge in practical, real-world scenarios. You will tackle moderately complex tasks, improve your problem-solving abilities and sharpen your critical thinking and adaptability. These courses are ideal for those seeking to bridge skill gaps, reskill into emerging areas, or prepare for more specialised roles by building confidence and competency in handling various challenges.

3) Advanced

Master your skills and elevate your professional competency. At this stage, EIT Campus courses focus on developing advanced expertise in critical analysis, strategic decision-making, and innovation within specialised or interdisciplinary fields. You will acquire the skills to manage complex tasks autonomously, drive impactful initiatives, and mentor others. These courses empower you to reskill for leadership roles, become a catalyst for innovation, and position yourself as an expert capable of addressing evolving challenges in your industry.

Reflect and take action

By engaging with the EIT Campus Skills Development Guide, you'll be able to reflect on what you've learned through the EIT Campus courses, take action to identify and address global problems with innovative solutions and inspire others while deciding how to continue your learning journey.

Example

A recent graduate with little professional experience and moderate domain knowledge can use the EIT Campus Skills Development Guide to identify which skills to develop first and build their skills portfolio.

"I recently graduated with a Master's in Food Systems and started working as a junior professional in the food sector. I see opportunities to innovate with new food products, technologies, and services. While I have strong skills in using systems approaches to tackle challenges, I want to identify other competencies to grow my impact and contribute to change."



Using the EIT Campus Skills Development Guide, I've assessed my current skills:

Communication (Intermediate level)

- I can share and adapt information effectively in different situations.
- I use appropriate language and tone for various audiences.
- I can lead group discussions and encourage participation.
- I provide clear, constructive feedback to support improvement.

Entrepreneurship (Beginner level)

- I can spot gaps or needs around me.
- I brainstorm creative solutions for specific problems.
- I take initial steps like making simple project plans.
- I seek feedback on ideas and adjust them based on input.

Conclusion

From this, I can see where to focus on developing these competencies further. As I continue to learn, I plan to actively apply and expand these skills both individually and within my team to drive innovation and contribute to meaningful changes in the food sector. By improving my competencies, I aim to improve not just my personal growth but also help promote a culture of collaboration and shared learning within my team and the wider community.



Thank you for reading this document

If you have any questions, please contact info@eit-campus.eu